

MONTHLY MEMBERSHIP PROGRESS REPORT

LOCATION AUSTRALIA

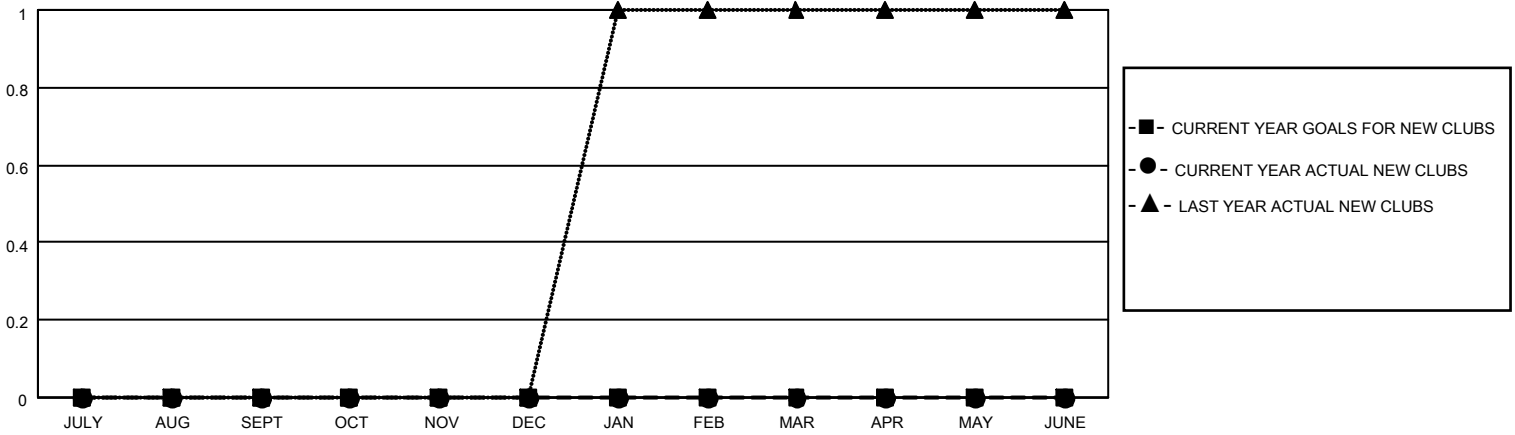
District 201V5

Results as of: 4/30/2023

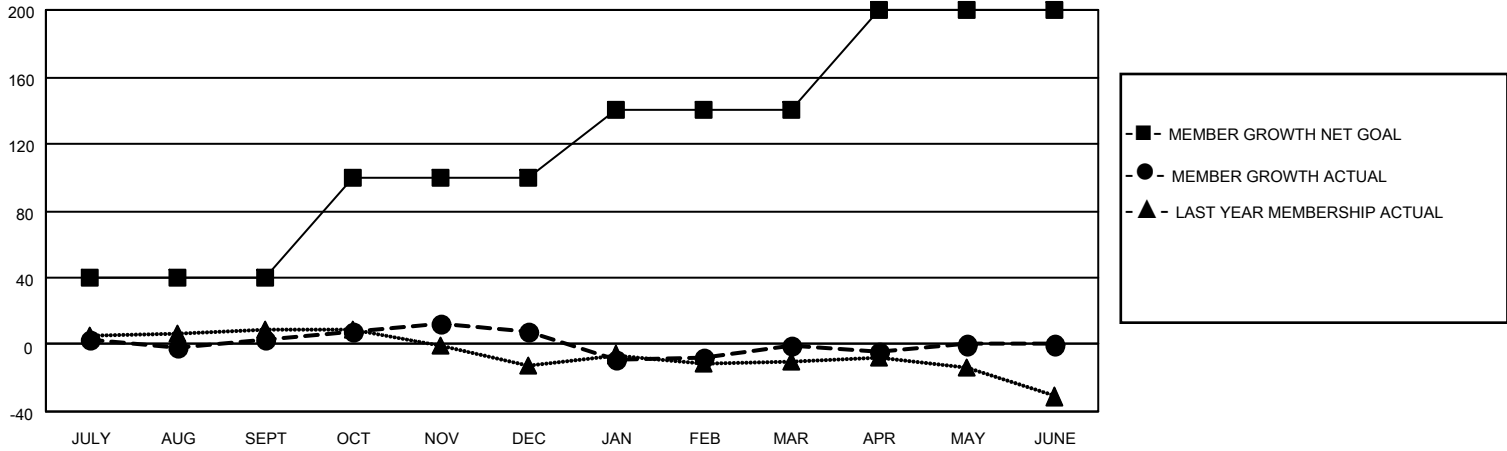
Clubs			
RESULTS FOR 2022-2023			
QUARTER	NEW CLUB GOAL	NEW CLUBS	DROPPED CLUBS
JULY/AUG/SEPT	0	0	0
OCT/NOV/DEC	0	0	0
JAN/FEB/MAR	0	0	0
APR/MAY/JUNE	0	0	0

Members			
RESULTS FOR 2022-2023			
QUARTER	MEMBER GROWTH NET GOAL	MEMBER GROWTH ACTUAL	DROPPED MEMBERS ACTUAL (including transfers)
JULY/AUG/SEPT	40	48	39
OCT/NOV/DEC	60	36	28
JAN/FEB/MAR	40	26	31
APR/MAY/JUNE	60	8	9

GOALS AND ACTUAL NEW CLUBS CUMULATIVE



GOALS AND ACTUAL MEMBERS CUMULATIVE



DROPPED CLUBS: 0

42 CLUBS OF 64 ADDED 1 OR MORE NEW MEMBERS

GENDER DISTRIBUTION

MALE	750 (63.34%)
FEMALE	433 (36.57%)
NON BINARY	0 (0.00%)
PREFER NOT TO ANSWER	1 (0.08%)

DROPPED MEMBERS

[CLICK HERE FOR CUMULATIVE MEMBERSHIP DATA](#)

DECEASED	17
CLUB CANCELLED	0
OTHER	90
TOTAL	107

TOTAL FAMILY UNIT MEMBERS	130
FAMILY MEMBERS PAYING HALF DUES	67